

L'Equipe de recherche en épidémiologie sociale (ERES) constitue l'une des 7 équipes de l'Institut Pierre Louis d'Epidémiologie et de Santé Publique (UMRS 1136) labellisé par l'Inserm et Sorbonne Universités.

Notre programme de recherche comprend à la fois l'étude des inégalités sociales et territoriales de santé en tant que telles et l'étude de certains des déterminants de la santé qui contribuent à ces inégalités, notamment l'environnement géographique, les conditions de travail, les insertions sociales et les origines migratoires.

Pratiques alimentaires

Le rôle de l'offre alimentaire

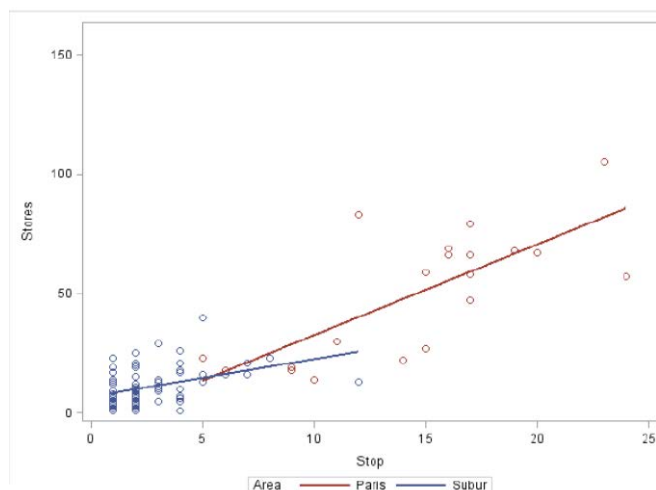
[Does Healthy Food Access Matter in a French Urban Setting? The Role of Food Retail Structure.](#)

Caillavet F, Kyureghian G, Nayga R, Ferrant C, Chauvin P.
Selected Paper prepared for presentation at Allied Social Science Association (ASSA) Annual Meeting, January 3-5, 2015, Boston, Massachusetts, 27 p.

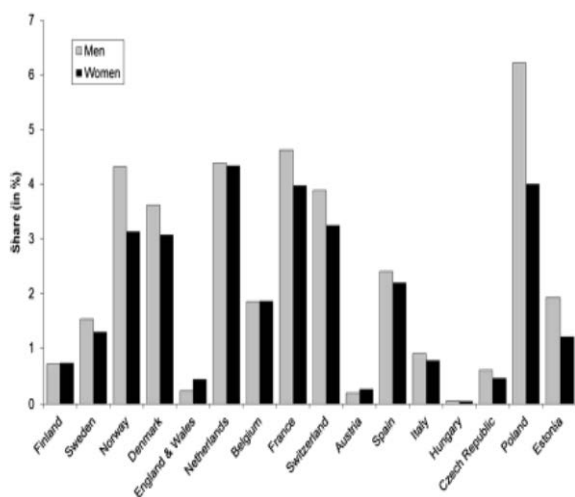
Les marqueurs sociaux de l'alimentation

[Is there still a French eating model? A taxonomy of eating behaviors in adults living in the Paris metropolitan area in 2010.](#)

Riou J, Lefèvre T, Parizot I, Lhuissier A, Chauvin P.
PLoS One 2015; 10(3): e0119161.



Metro/rail stations or stops and number of stores in Paris and suburbs.



Share of ASMR from ill-defined conditions on all-cause ASMR (in %) by country and sex. 30-79 years.

Comparaisons internationales

La qualité des données de mortalité

[Socioeconomic differences in the use of ill-defined causes of death in 16 European countries.](#)

Kulhánová I, Menvielle G, Bopp M, Borrell C, Deboosere P, Eikemo TA, Hoffmann R, Leinsalu M, Martikainen P, Regidor E, Rodríguez-Sanz M, Rychtaříková J, Wojtyniak B, Mackenbach JP.
BMC Public Health 2014; 14: 1295.

Disparités éducatives et mortalité

[The Contribution of National Disparities to International Differences in Mortality Between the United States and 7 European Countries.](#)

Van Hedel K, Avendano M, Berkman LF, Bopp M, Deboosere P, Lundberg O, Martikainen P, Menvielle G, Van Lenthe FJ, Mackenbach JP.
Am J Public Health 2015 Feb 25: e1-8.

Risques psychosociaux au travail

[Psychosocial Factors at Work and Occupational Injury: Results From the French National SUMER Survey.](#)

Lesuffleur T, Chastang JF, Sandret N, Niedhammer I.
J Occup Environ Med 2015; 57(3): 262-9.

Infection à VIH

L'accès aux traitements des migrants

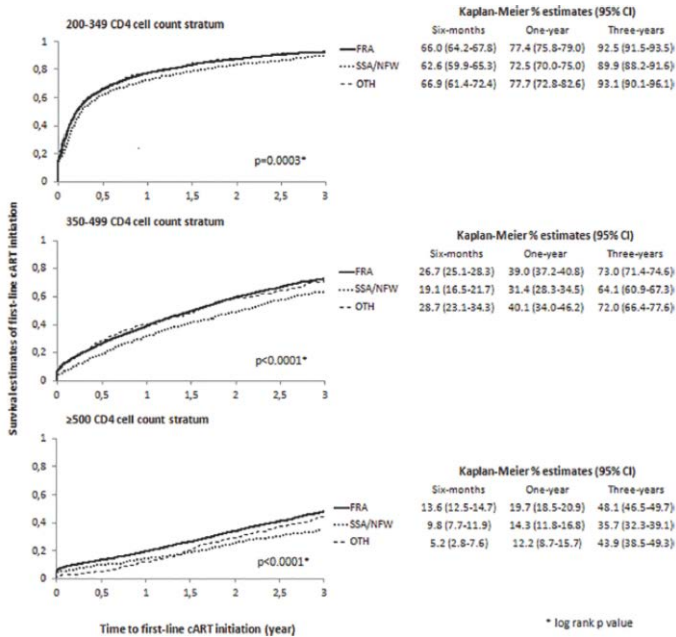
Later cART Initiation in Migrant Men from Sub-Saharan Africa without Advanced HIV Disease in France.

de Monteynard LA, Dray-Spira R, de Truchis P, Grabar S, Launay O, Meynard JL, Khuong-Josses MA, Gilquin J, Rey D, Simon A, Pavie J, Mahamat A, Matheron S, Costagliola D, Abgrall S; French Hospital Database on HIV. PLoS One 2015; 10(3): e0118492.

La qualité de vie des patients co-infectés par le VHC

Spontaneous and post-treatment HCV clearance: relationships with health-related quality of life in HIV infection (ANRS-VESPA2 study).

Marcellin F, Demoulin B, Spire B, Suzan-Monti M, Roux P, Protopopescu C, Sagaon-Teyssier L, Duracinsky M, Dray-Spira R, Carrieri MP; and the ANRS-VESPA2 Study Group. Expert Rev Gastroenterol Hepatol 2015 Feb 27: 1-13. [Epub]



La santé mentale

Les caractéristiques sociales et territoriales de la consultation pour dépression

Environmental and individual characteristics associated with depressive disorders and mental healthcare use.

Annequin M, Weill A, Thomas F, Chaix B. Ann Epidemiol 2015; [Epub]

Les prédicteurs de la dépression maternelle

Predictors of persistent maternal depression trajectories in early childhood: results from the EDEN mother-child cohort study in France.

Van der Waerden J, Galéra C, Saurel-Cubizolles MJ, Sutter-Dallay AL, Melchior M; the EDEN Mother-Child Cohort Study Group. Psychol Med 2015 Feb 13:1-14. [Epub]

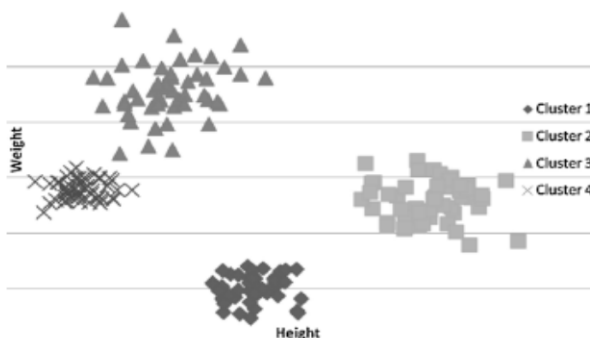
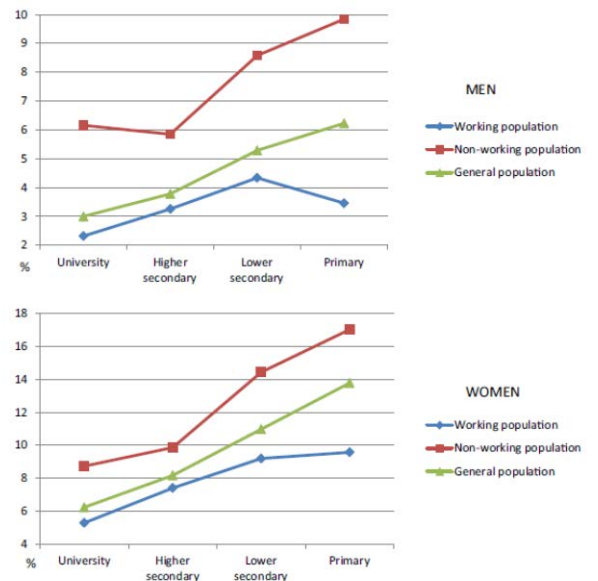
Activité professionnelle et santé mentale

Educational inequalities in major depressive and generalized anxiety disorders: results from the French national SIP study.

Murcia M, Chastang JF, Niedhammer I. Soc Psychiatry Psychiatr Epidemiol 2015 Jan 22: [Epub]

Classic and emergent psychosocial work factors and mental health.

Niedhammer I, Lesuffleur T, Algava E, Chastang JF. Occup Med (Lond) 2015; 65(2): 126-34.



Questions méthodologiques

Apport des techniques de clustering à l'épidémiologie

A general framework for a reliable multivariate analysis and pattern recognition in high-dimensional epidemiological data, based on cluster robustness: A tutorial to enrich the epidemiologists' toolkit

Lefebvre T, Chauvin P.

Rev Epidemiol Sante Publique 2015; 63(1):9-19.